



Telemetry Tensile Link

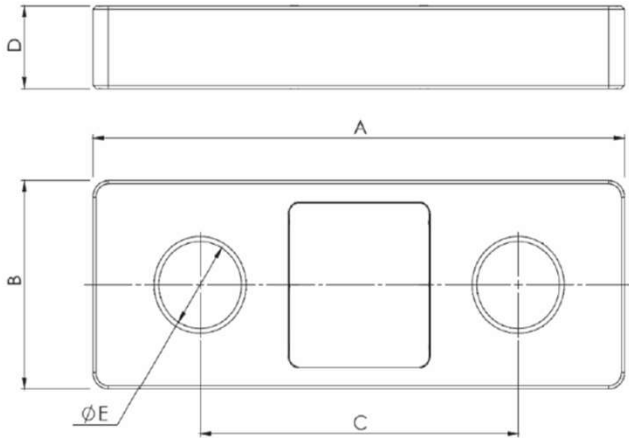
TL-3.0

The TL-3.0 is a third generation Telemetry Tensile Link load cell. A light weight wireless tension measuring unit that combines a high level of performance with a robust design for harsh environments.

With a range up to 800m and a huge battery life of 700 hours the TL-3.0 can be paired with one or a multiple number of TW-3.0-T Telemetry Handheld Displays.



Dimensional Data



Features:

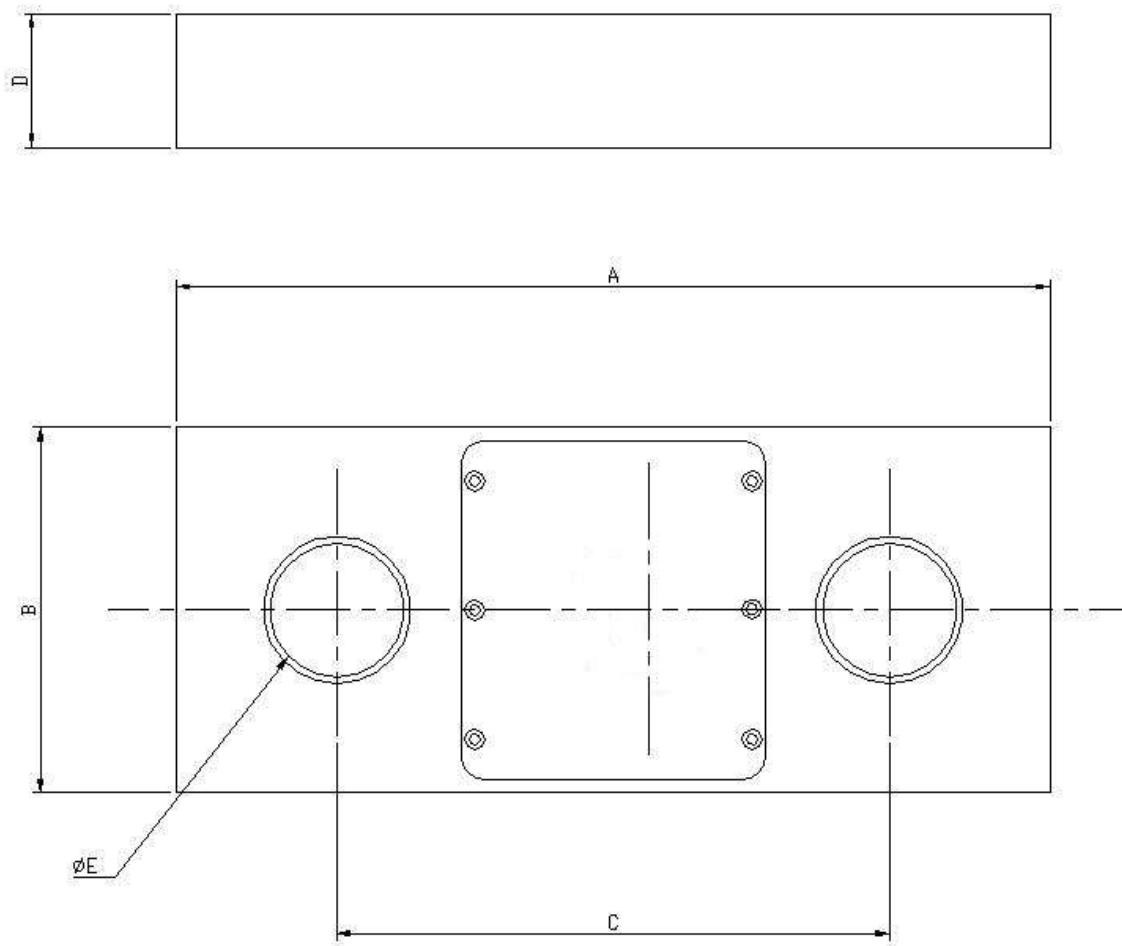
- Light weight aerospace grade aluminium
- Ability to transmit to unlimited handheld displays with up to 12 load cells
- 2.4GHz licence free frequency
- High accuracy
- Rebranding option
- 800m signal range
- Remote power on/off feature
- Sleep mode for battery conservation

Specification

Link Material:	Aluminium
Design:	Holes designed to fit fed spec shackles / Pairing switch / Signal LED / Charging socket
Bridge Resistance:	700Ω
Battery:	3.6V Li-Po Rechargeable battery
Battery Life:	700 hours continuous (2 years non-operational)
Charger:	Supplied with USB Charger
Operating Temperature:	-20°C to +60°C
Handheld Display:	One or more TW3.0- T displays
Frequency:	2.4GHz
Range:	Up to 800m line of sight
Calibration:	Supplied with calibration, proof load and test certificates to traceable to UKCA BS EN ISO 7500-1 2018
Protection:	IP65
Packaging:	Rugged and watertight case for links up to 50T / Custom made wooden case for larger capacities



Dimension Data:



Dimensions and Specification									
Load Capacity (tonnes)	Dimensions (mm)					Accuracy % FRO	Proof test % SWL	Weight (kg)	Default Resolution (kg)
	A	B	C	D	ØE				
5	260	109	180	25	28	±0.2	200	2.0	1
12	260	109	165	40	38	±0.2	200	2.6	5
25	340	127	204	50	53	±0.2	200	4.5	10
35	370	149	210	50	60	±0.2	150	6.0	10
50	395	160	220	60	73	±0.2	150	10.5	50
100	525	220	265	100	99	±0.3	150	19.0	100
120	525	240	265	100	99	±0.3	150	21.5	100
150	587	260	295	125	112	±0.3	150	-	100
200	658	320	320	125	128	±0.5	150	-	100
300	790	370	380	147	154	±0.5	150	-	100



Telemetry Handheld Display TW-3.0-T

The TW-3.0-T Telemetry Handheld Display is a modern, slimline, multifunctional load monitoring device which is unique to DLM.

This innovative design is built with the user in mind. It has a large, high quality LCD screen which is optically bonded removing the need for a back light and improving clarity in bright sunlight. Each of the 12 devices on the network can be given a customisable friendly name made visible on the screen to make instant identification possible.

This multi featured high precision unit ensures reliable load readings while also being simple to operate. It can be used in conjunction with any DLM manufactured load cell, just look for the d+ logo on our products.

Features:

- Creates networks comprising of up to 12 individual devices from a single handheld display
- Up to 800m wireless range
- Ability to customise load cell name
- Internal audible alarm (90dB @ 0.1m / 75dB @ 1m)
- USB data logging
- RS232 serial or 0-5V analogue output
- Four advanced maths channels for totalising and use of trigonometric functions
- Built in pulse measurement to show speed and distance
- Rolling average feature for unsteady loads
- Specifically designed to work in high noise environments around powerful WiFi networks or port terminals
- Built in signal checker
- High quality optically bonded LCD display to improve clarity in bright sunlight



Applications:

- Weight indication for any load cell fitted with DLM TW3.0 transmitter board
- For use with wireless Running Line Monitors and Saddlebacks