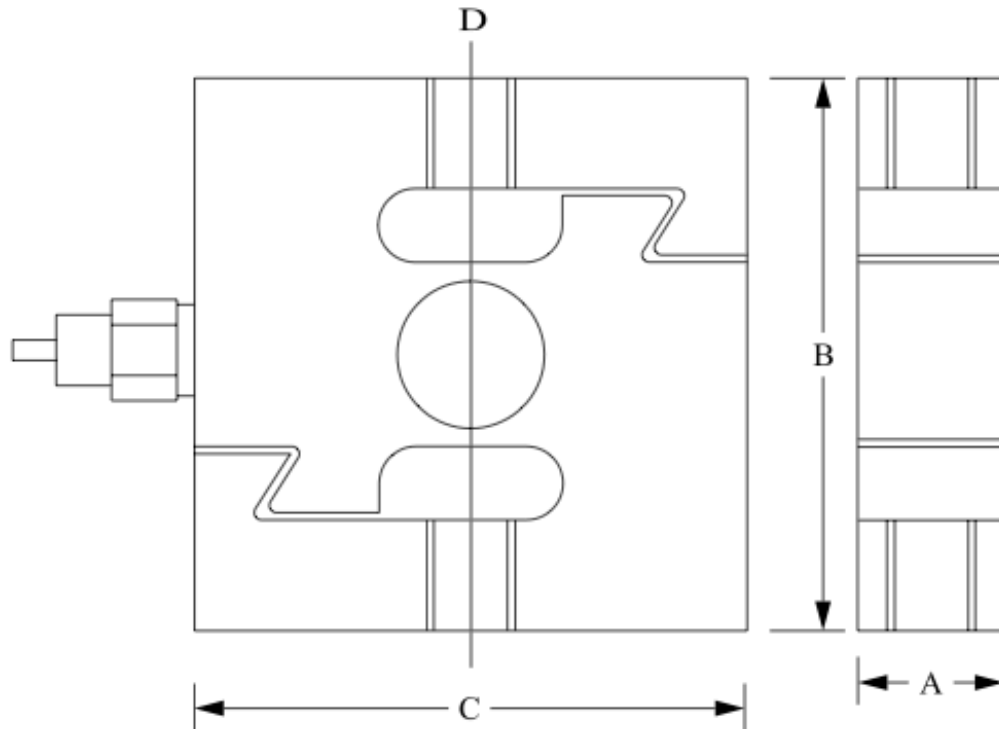


Kelba 'S' Type Load Cell KPA 6110P



STANDARD CAPACITIES

100 , 250 , 300 , 500 , 750kg
1 , 1.5 , 2 , 2.5 , 5 , 10 , 20 T

SPECIFICATIONS

Rated Output	3.00mV/V ± 0.1
Accuracy class	0.03
Non-linearity	0.03 % F.S
Hysteresis	0.03 % F.S
Non-repeatability	0.02 % F.S
Creep in 30 minutes	0.03 % F.S
Temperature effect span	15 PPM / °C of applied Load
Temperature effect zero	26 PPM / °C of applied Load
Compensated temperature range	- 10°C ~ 40 °C
Operating temperature range	- 40°C ~ 65 °C
Zero balance	± 1 % F.S
Input resistance	385 ± 15 Ω
Output resistance	350 ± 3 Ω
Safe overload	150 % F.S
Ultimate overload	300 % F.S
Excitation voltage	10 VAC/DC
Maximum excitation voltage	15 VAC/DC
Insulation resistance	> 5000M Ω (50 V DC)
Environmental protection	IP67
Material	Alloy tool steel
Cable length	6 Mtr

Wiring Color Code

Excitation + Red	Signal + Green
Excitation - Black	Signal - White

Capacity	A	B	C	D (THREAD)
100-750 kg	19	80	70	1/2 - 20 UNF 2B
1-1.5t	25	80	70	1/2 - 20 UNF 2B
2-5t	25	108	95	3/4 - 16 UNF 2B
10t	51	178	130	1 1/4 - 12 UNF 2B
20t	60	190	160	1 1/2 - 12 UNF 2B

LOADCELL  SUPPLIES

Unit 1, 3 Atlas Court, Welshpool, WA, 6106

P: (08) 9451 5070 E: wayne@loadcell.com.au W: www.loadcell.com.au