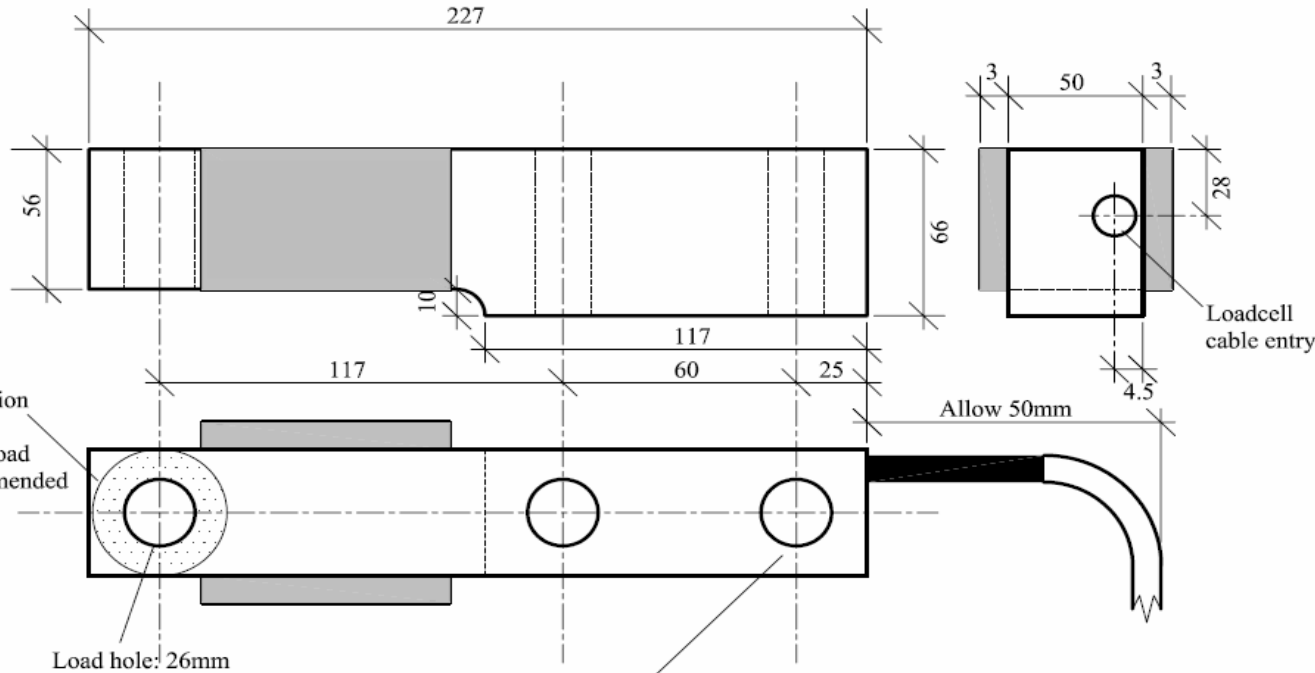


Kelba Shearbeam Loadcell Model: KA-10,000Z



Shaded section represents maximum load area recommended (50mm)

Load hole: 26mm

Mounting holes (2) drilled 26mm diameter - bolts to be 8.8 grade (min) hi-tensile socket head cap screw or hex head bolt.
Bolt length: Sufficient to ensure a min. of 1.25 x bolt diameter into mounting base plate

Bolt Torque: 660 Nm
487 ft lb
(M24 x 3 CLASS 8.8 Grade to AS1110)

Mounting Accessories

- Mounting Kit KMA - 10,000 N
- Load Button see drg KLBM-25

General Specifications

Rated Capacity: 10,000kg
Safe Load Limit: 15,000kg (static)

Construction: Tool Steel
Protection: Electroplated zinc
Cell Weight: 5.3kg

Electrical

Excitation Voltage: 5 - 15 V.D.C.
Output at rated: 2.2mv/V +/- 0.5% capacity
Cable length: 6000mm (std)
Input impedance: 380 ohm +/- 6% (black to red)
Output impedance: 350ohm +/- 0.2% (green to white)

Environmental Rating: IP67

* NOTE: Classified by Londonderry Occupational Safety Centre as a "Simple Device" and therefore suitable for hazardous and explosive dust environments subject to installation in compliance with the relevant Australian Standards.

Wiring colour code

Excitation + Red
Excitation - Black
Signal + Green
Signal - White
Shield Bare

LOADCELL SUPPLIES

Unit 1, 3 Atlas Court, Welshpool, WA, 6106

P: (08) 9451 5070 E: wayne@loadcell.com.au W: www.loadcell.com.au