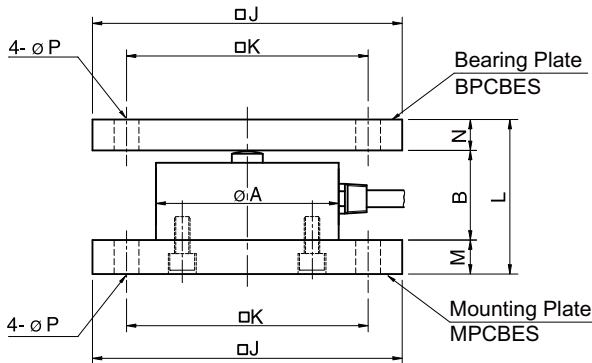
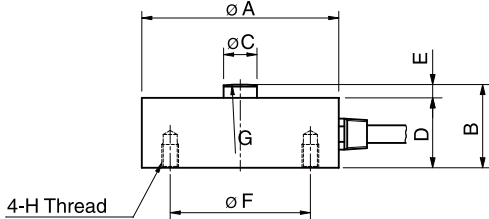
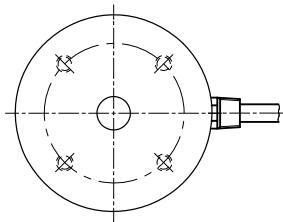


## Model CBES Series

Compression

Low Profile Load Cell (50kg ~ 20t)



The model CBES miniature type is designed for low profile compression service.

Its compact size makes the cell ideal for a wide range of applications including testing & weighing systems.

- 17-4PH Stainless steel construction.
- Fully welded seal with stainless steel cover for hostile environment applications.
- Compact size with low profile.

### SPECIFICATIONS

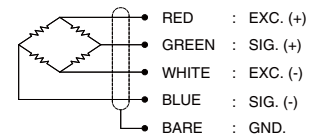
MODEL	CBES
Rated capacity (R.C.)	50, 100, 200, 500kg 1, 2, 3, 5, 10, 20t
Rated output(R.O.)	2.0mV/V $\pm$ 0.25%
Non-linearity	$\leq$ 0.1% R.O.
Hysteresis	$\leq$ 0.1% R.O.
Non-repeatability	$\leq$ 0.1% R.O.
Creep error	$\leq$ 0.03% in 20min.
Zero balance	$\leq$ 1% R.O.
Compensated temperature range	-10 ~ 70°C
Operating temperature range	-20 ~ 80°C
Temp. effect on rated output	$\leq$ 0.05% LOAD/10°C
Temp. effect on zero balance	$\leq$ 0.05% R.O./10°C
Terminal input resistance	700 Ohms $\pm$ 10 Ohms
Terminal output resistance	700 Ohms $\pm$ 10 Ohms
Insulation resistance (Min.)	2000 MOhms at 50V DC
Excitation voltage	10V(Recommended), 15V(Max.)
Electrical connection	50kg ~ 2t $\phi$ 5mmx3m(22AWG x 4Core Shielded) 3t ~ 20t $\phi$ 7mmx6m(22AWG x 4Core Shielded)
Protection class	meets IP 68
Safe overload	150% R.C
Ultimate overload	300% R.C

### ORDERING INFORMATION

#### CBES - 10T

MODEL	CAPACITY
CBES	50, 100, 200, 500kg 1, 2, 3, 5, 10, 20ton

### WIRING INFORMATION



### Dimension-mm

Capacity	A	B	C	D	E	F	G	H	J	K	L	M	N	P	Bearing Plate	Mounting Plate	Weight(kg)
50kg ~ 2t (490.3N ~19.61kN)	59	25	10	21	4	42	R50	M5x0.8P Depth 7	100	78	55	15	15	8	BPCBES-1	MPCBES-1	0.35
3t ~10t (29.42kN ~98.07kN)	98	45	20	40	5	72	R150	M6x1P Depth 8	160	126	105	30	30	14	BPCBES-2	MPCBES-2	2.3
20t (196.1kN)	118	50	20	45	5	90	R250	M8x1.25P Depth 15	160	126	110	30	30	14	BPCBES-3	MPCBES-3	3.7

\* Specifications are subject to change without notice

APR, 2013